



TRAFFIC & TRANSPORT

#AbuDhabiGP

OCT, 2024

External Shuttle



Yas Mall Parking

- Yas Mall will service guests that have a ticket for the F1 ADGP 2024 that don't have access to parking inside the circuit walls.
- After the guest park, they have an option to walk or take the Circuit Circular shuttle to their desired location at Yas Marina Circuit.
- Main pickup and drop off location for the shuttles located at the Tryano Parking at Yas Mall. The access should be from Cinema Parking.
- Segregated walking route from Cinema Parking to Circuit Circular load zone at Tryano Parking.
- Total capacity is 8,965 parking spaces, not considering overflow sand parking.



Circuit Circular - 2024

- Connects Yas Mall to Yas Marina Circuit with 7 different stops along the way.

C1 Yas Mall – Tryano

C2 Warner Bros.

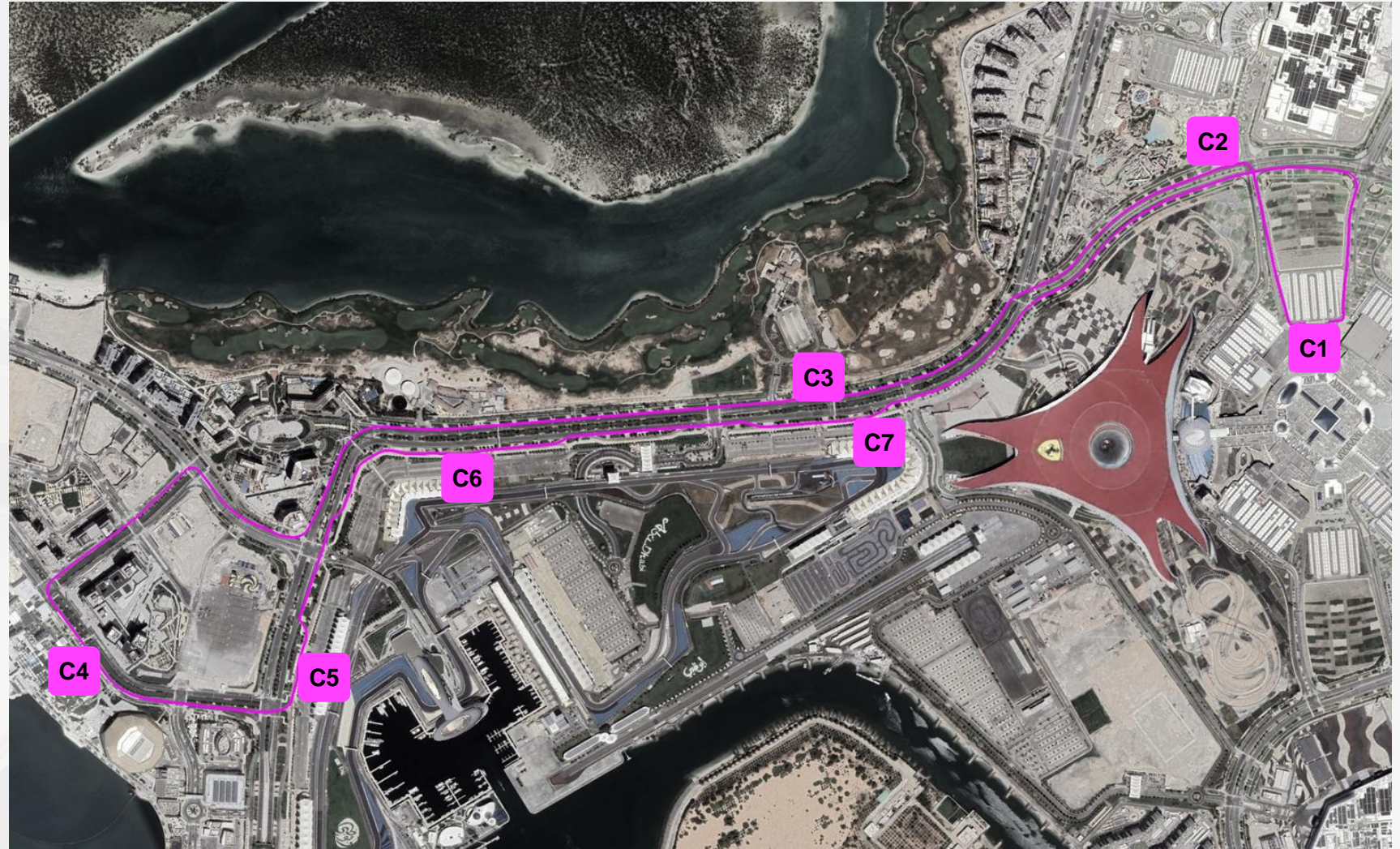
C3 Yas Links

C4 Yas Bay – Hilton Hotel

C5 Marina & South Grandstand

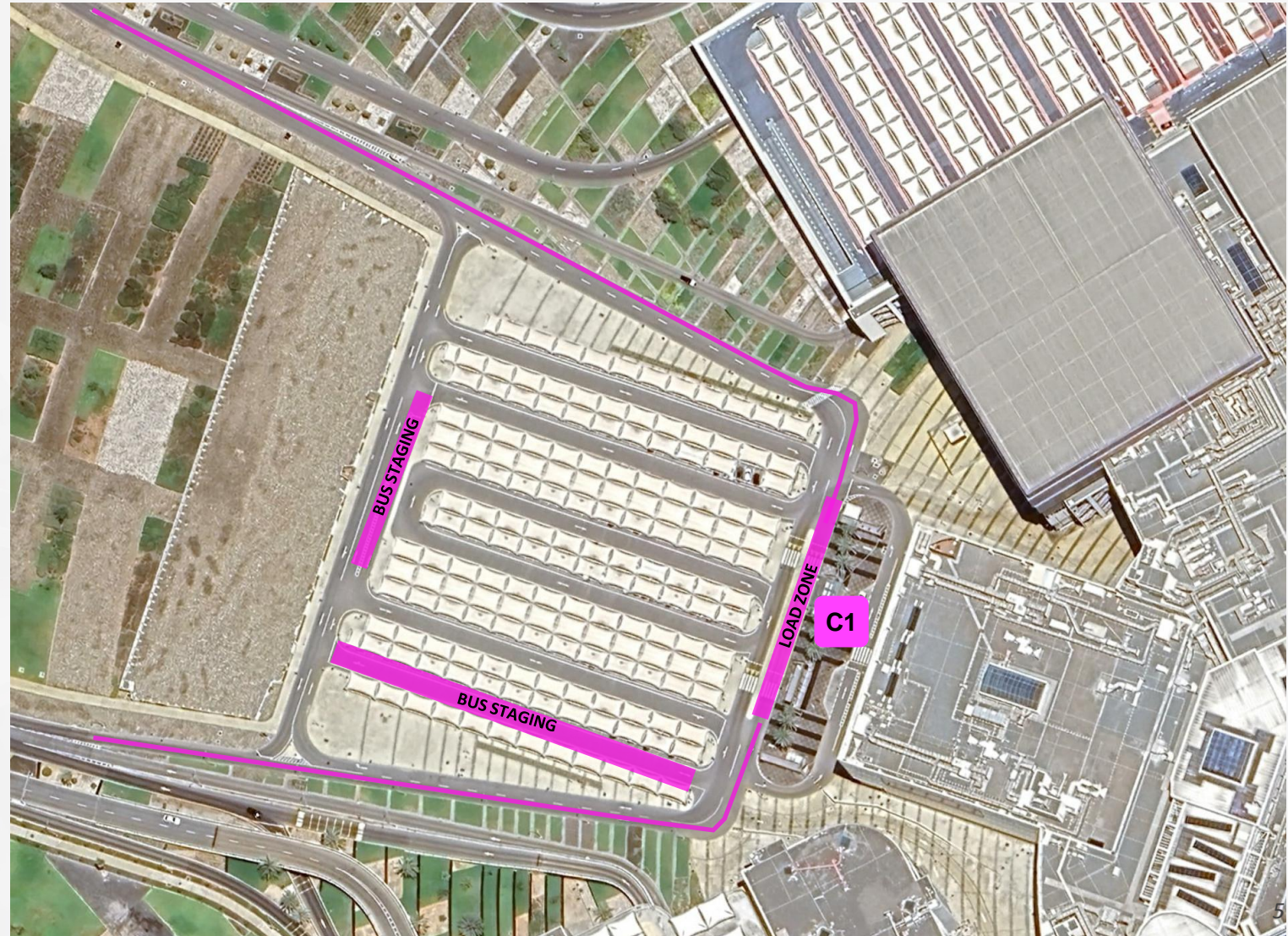
C6 West, Main & AD Hill

C7 North Grandstand



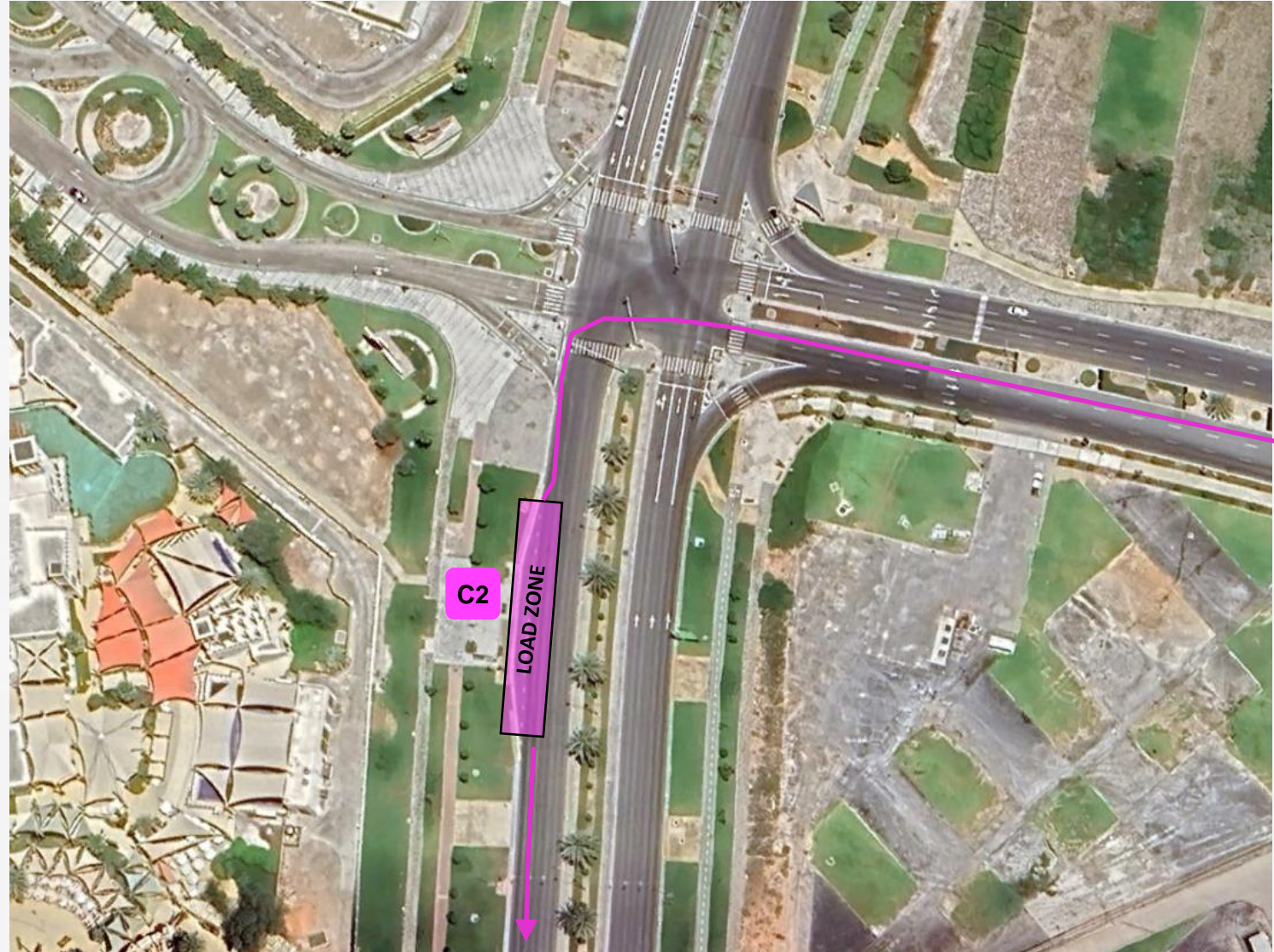
Circuit Circular – C1

- **C1 Stop – Tryano Parking**
- Circuit Circular pick up & drop off to be done at Tryano Parking.
- Tryano will also be used to stage ITC buses.




Circuit Circular – C2

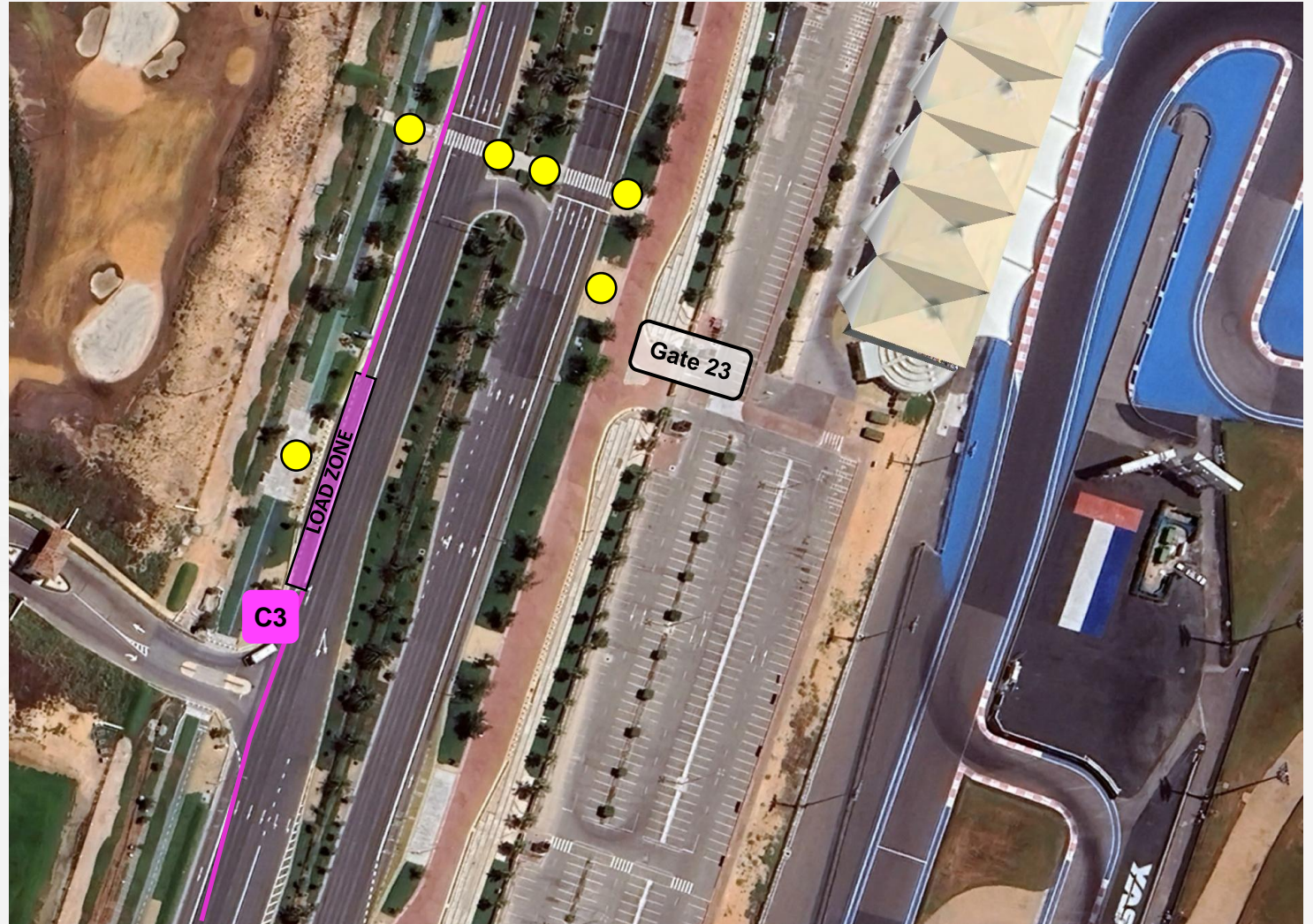
- **C2 Stop – Warner Bros. & Yas Water World**
- The shuttle will use the existing bus stop on Yas Leisure Drive, next to Warner Bros. complex, located within a short walking distance from parking and from WB Abu Dhabi and Double Tree hotels.



Circuit Circular – C3

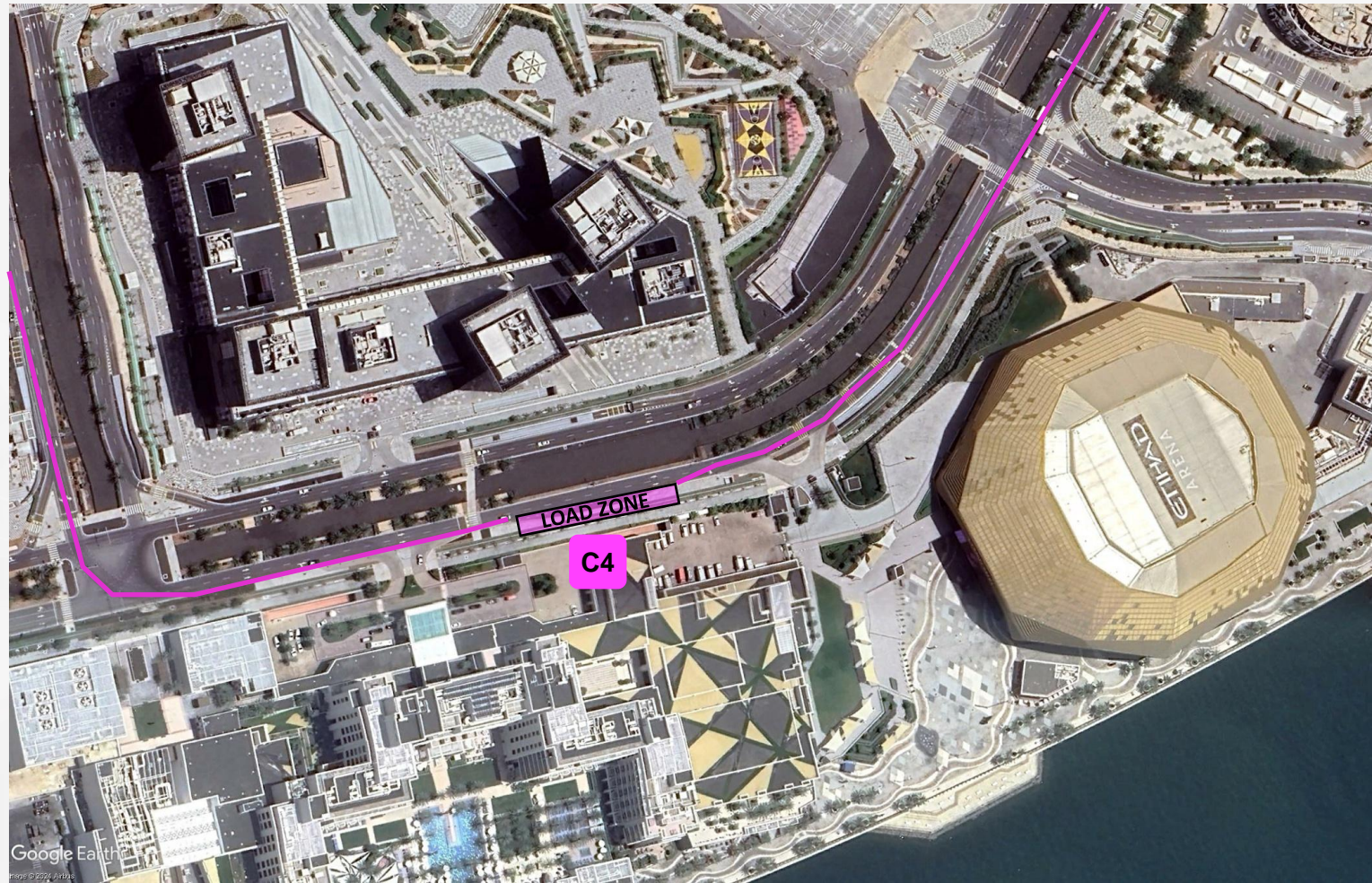
- **C3 Stop – Yas Links**
- The staff are to assist any guest wanting to go to North Grandstand or Yas Links. If wanting to go to North Grandstand, the guest will be directed and assisted with crossing the road to reach Gate 23.

 Traffic Marshal



Circuit Circular – C4

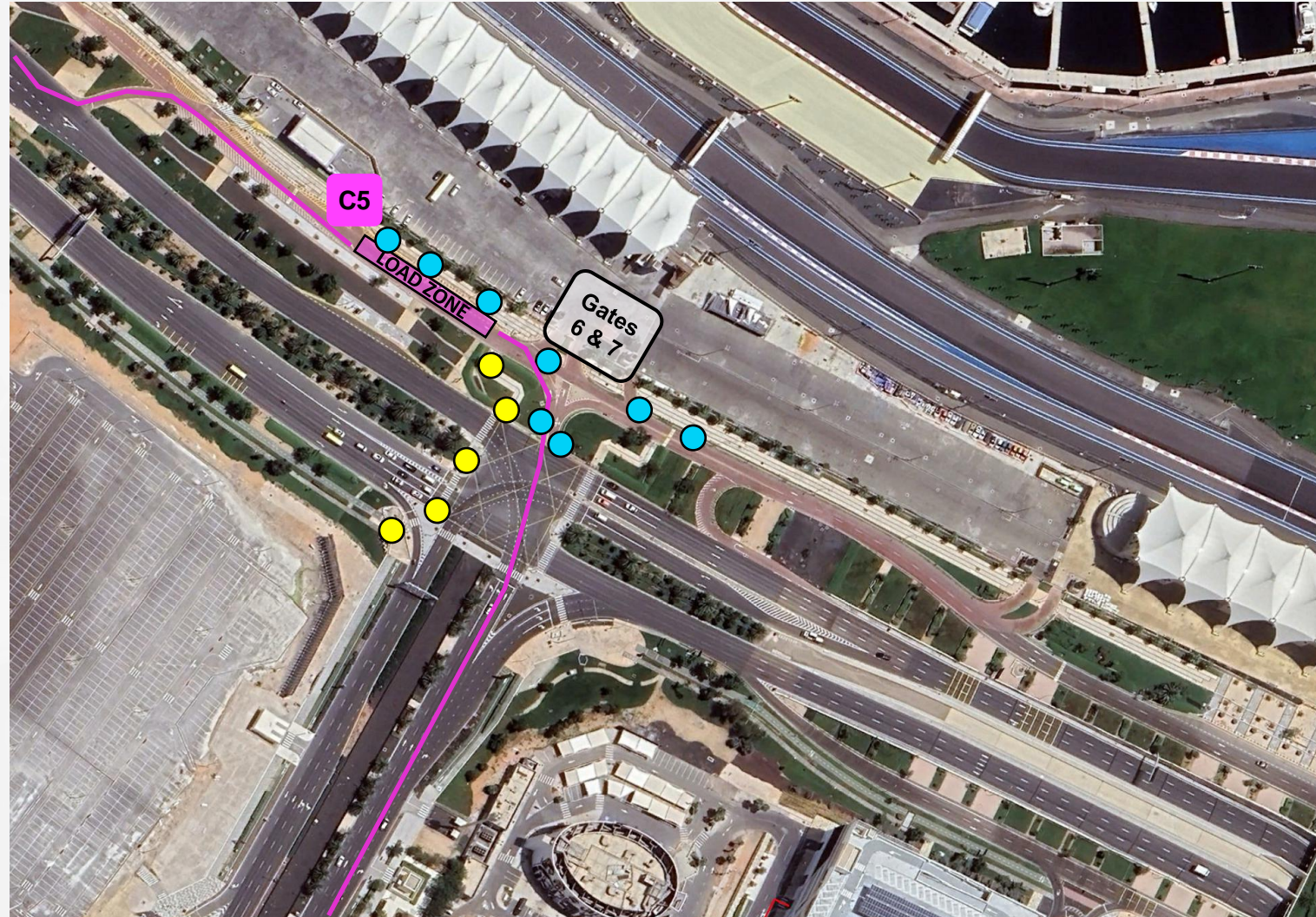
- **C4 Stop – Yas Bay/Hilton**
- The shuttle will use the existing approved ITC day to day shuttle stop location. This are will be used for any guest that are staying at the Hilton hotel or any guest that is at Yas Bay that wish to use the shuttle to reach any of the areas around the island during the Race Weekend.



Circuit Circular – C5


- **C5 Stop – South & Marina Grandstands**
- Guests being dropped at C5 will have the option to enter the Marina Grandstand through Gates 6 & 7 or walk further down to enter South Grandstand via Gates 2 & 3.
- Traffic marshal access control, ensuring only Circuit Circular buses are allowed to enter slip road.
- Increased headcount to support peak egress operations
- Traffic team managing the pedestrian crossing flow from external parking to PSA

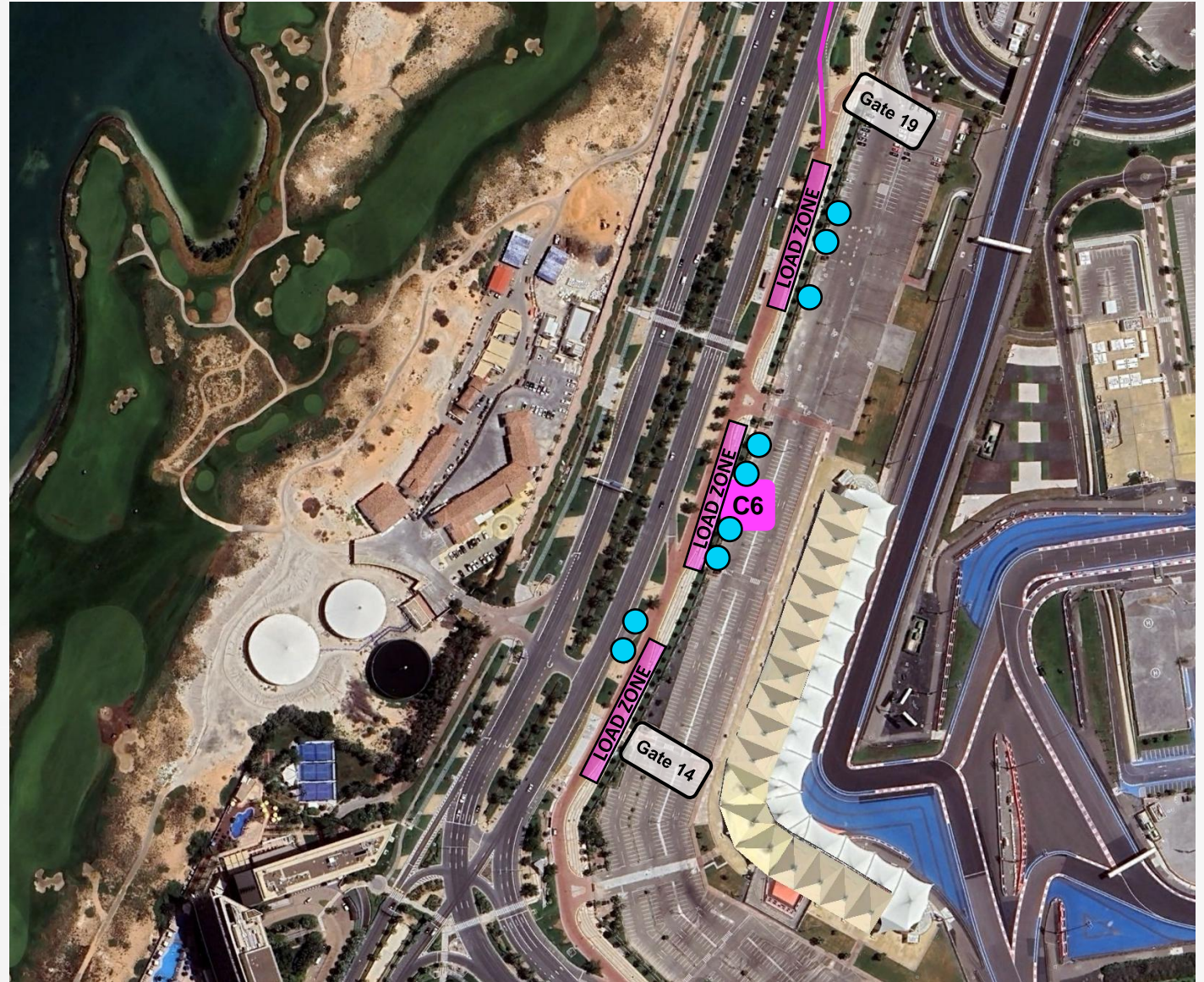
- Pedestrian Crossing Traffic Marshal
- Circuit Circular Operation Traffic Marshal



Circuit Circular – C6


- **C6 Stop – West & Main Grandstands / AD Hill**
- The C6 stop presents 2 extra spaces for supporting load zones, increasing drop off and pick up capacity.
- Depending on PSA status, all 3 load zones can be used for guests drop off.
- For peak egress, all 3 load zones can be used for approximately 15 buses simultaneously.
- Increased headcount to support peak egress operations.

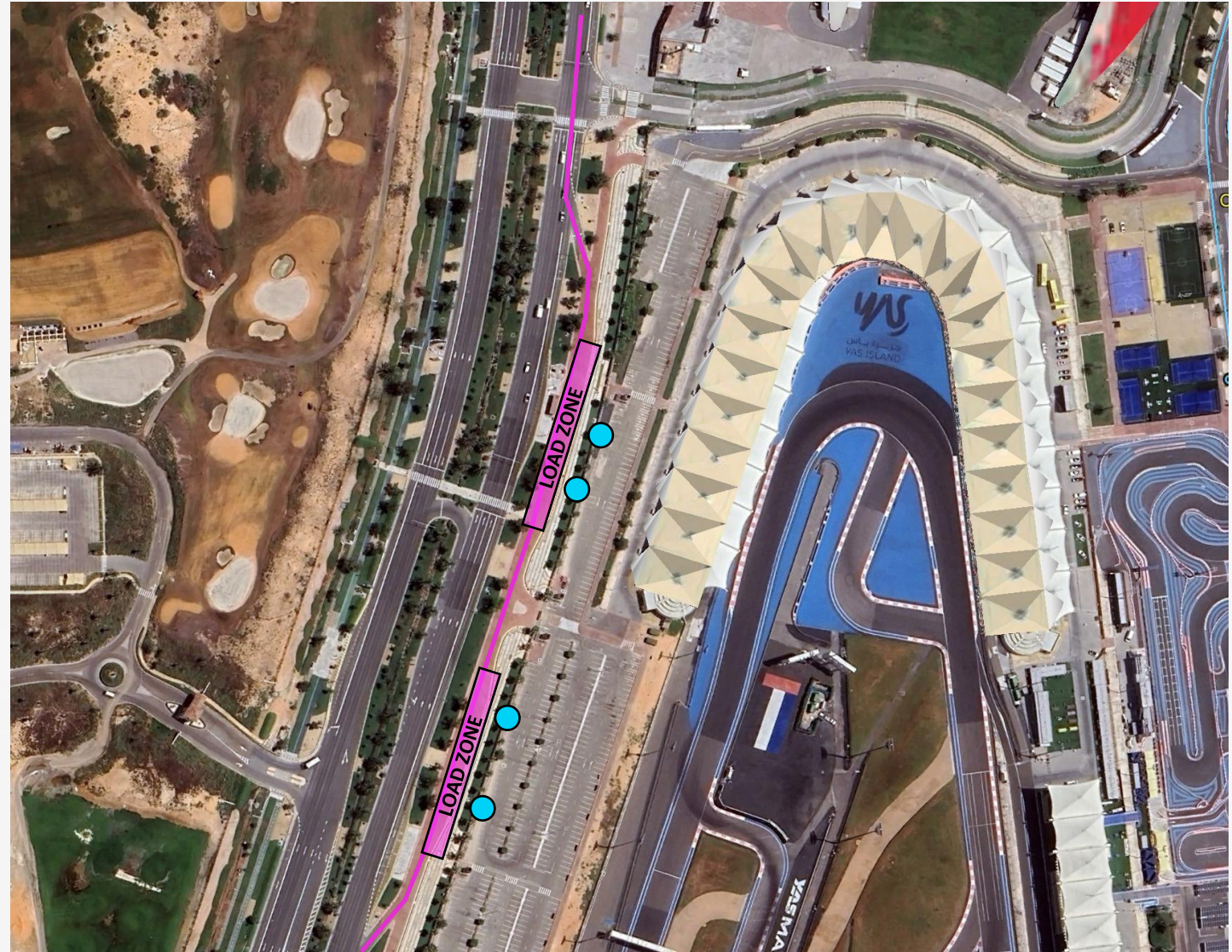
 Circuit Circular Operation Traffic Marshal



Circuit Circular – C7

- **C7 Stop – North Grandstand**
- The C7 stop presents 1 extra space for supporting load zone, increasing drop off and pick up capacity.
- Depending on PSA status, both load zones can be used for guests drop off.
- For peak egress, all 2 load zones can be used for approximately 10 buses simultaneously.

 Circuit Circular Operation Traffic Marshal

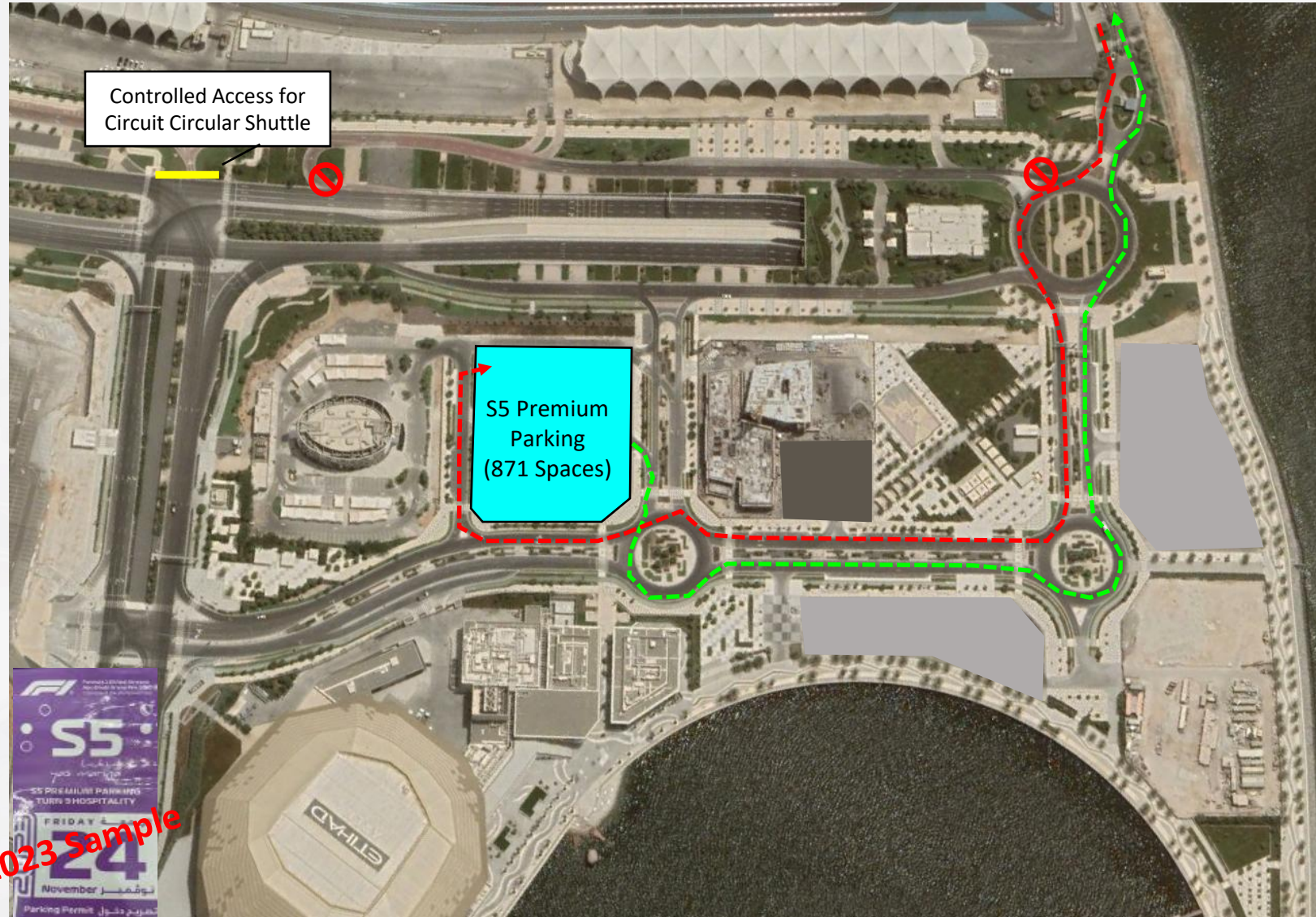


Yas Marina Shuttle

- S5 parking will be used for Turn 9 and Yas Marina client groups.
- The access to internal roads will be managed by traffic team to ease traffic build up and increase access efficiency.
- Parking capacity is 871 spaces.
- Dedicated shuttle will take guests from S5 to Yas Marina.

Shuttle Route Ingress -----

Shuttle Route Egress -----



Internal Shuttles



Pit Lane Walk Shuttle

- The Pit Lane Walk Shuttle is exclusive for **Thursday only**.
- This shuttle reaches all main areas and helps guests who arrive at the Circuit reach the Pit Lane Walk queuing area.

C1 West Gate

C2 G4

C3 Deck @2

C4 North Oasis/Kart Zone

C5 East Gate



Courtesy Shuttle

- The Courtesy Shuttle is the main public transport service within YMC, moving guests to and from various locations within the circuit with ease.
- The shuttle will have 5 main drop off & pick up points.
- The service will run 30 minutes before gates open until 01:00AM daily, in a continuous loop.

C1 West Gate

C2 VIP Roundabout

C3 Deck @2



C4 North Oasis/Kart Zone

C5 East Gate



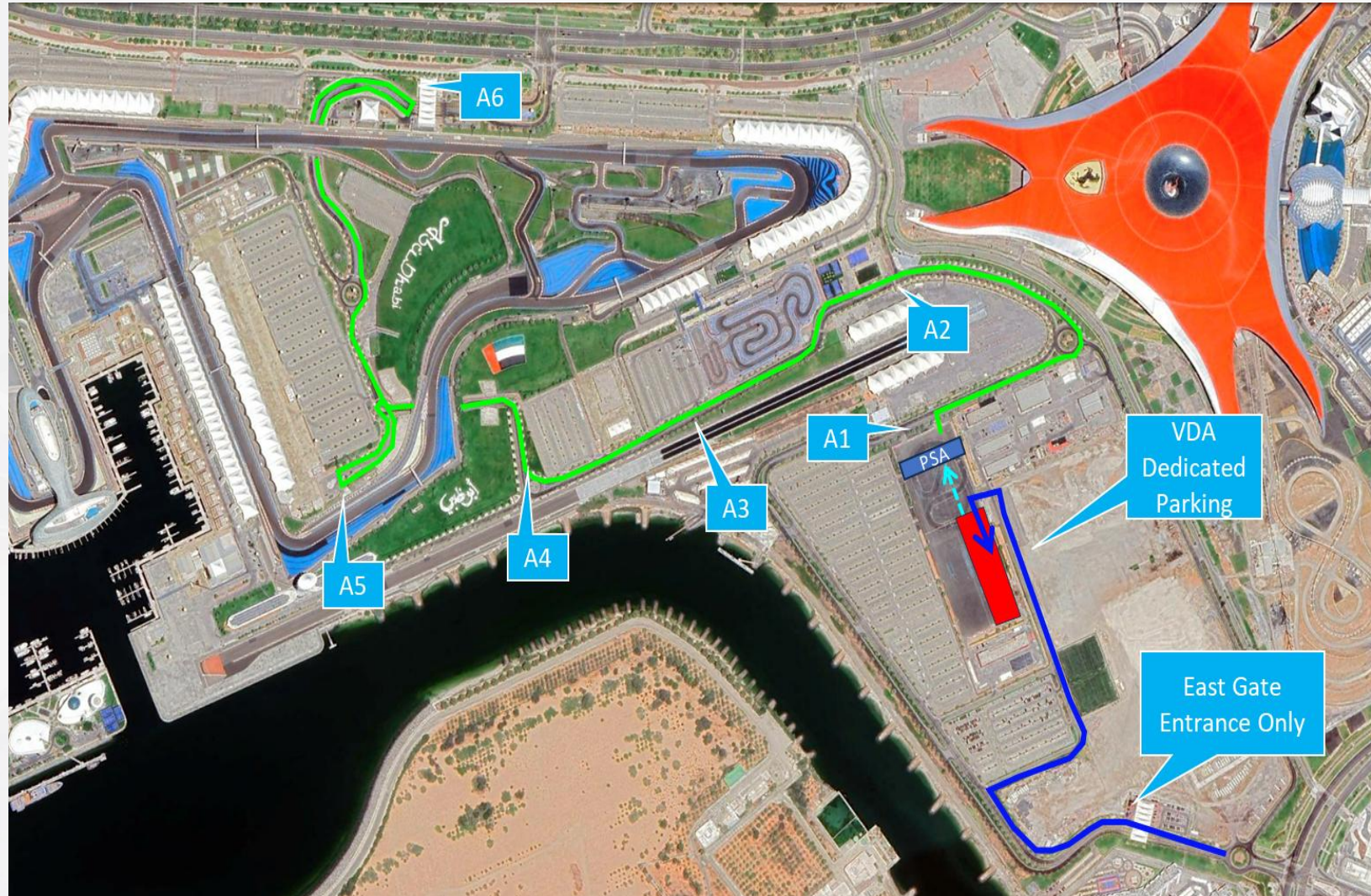
Staff Shuttle

- The shuttle will have 6 main drop off & pick up points.
- Staff Shuttle Route A service for internal locations.
- Timings: 06:00 – 01:00 Thurs – Sun.

Parking Ingress 
Shuttle Route 

- Staff VAPP doesn't allow staff to roam within the venue. All drop offs with staff VAPPs are to be done in VDA ONLY.
- Staff VAPPs are a controlled process with limited parking.

- A1 VDA Red 7
- A2 North Oasis
- A3 Gold 6 (Media Center)
- A4 Deck @2
- A5 Main Grandstand
- A6 West Gate



Media Shuttle

- The Media shuttle will have 3 main drop off & pick up points.
- Media Shuttle Route service for internal locations.
- Shuttle Schedule TBC based on Media Centre times

M1 Gold 6 Parking

M2 West Gate

M3 Media Centre

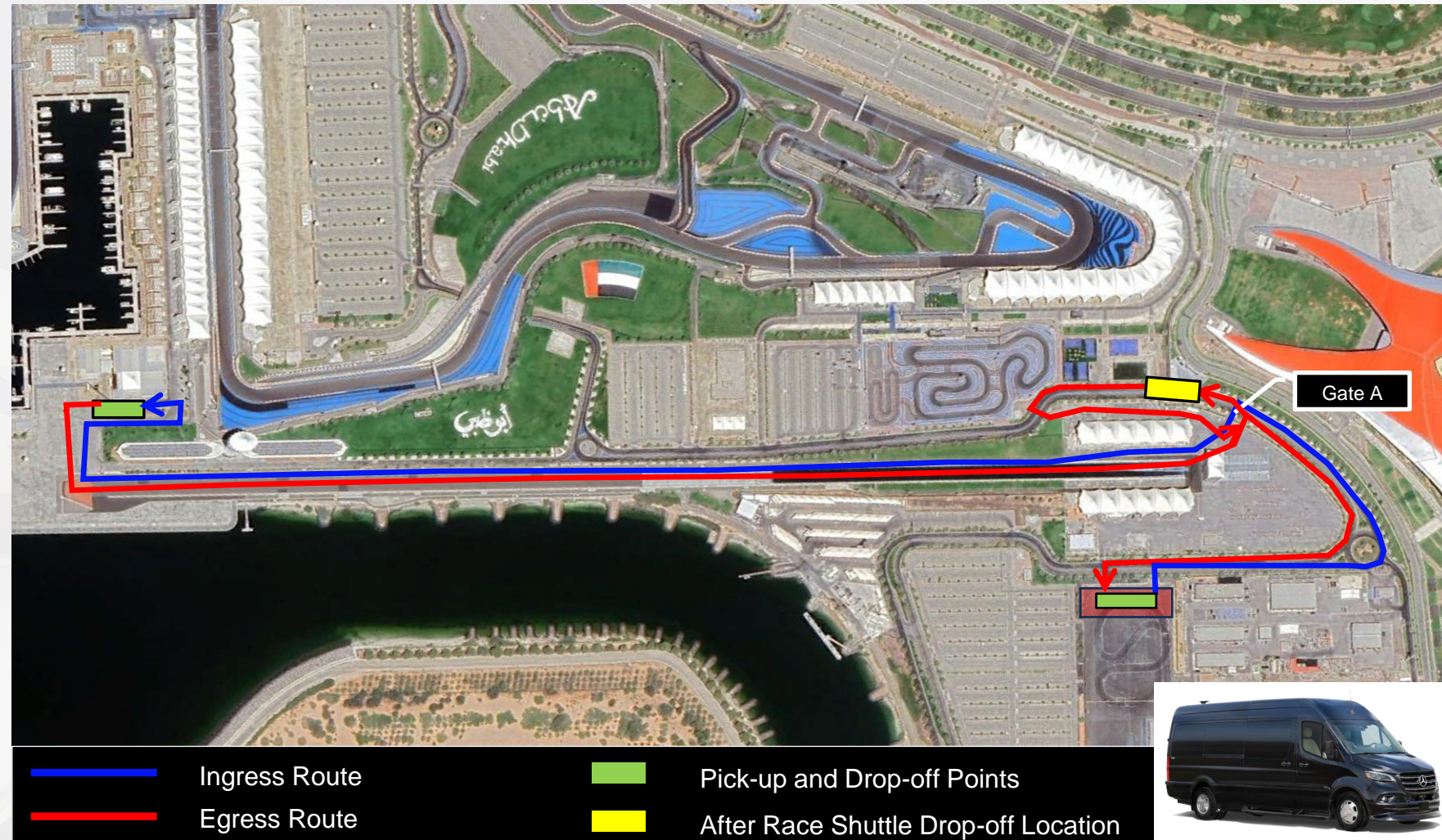


Paddock Club Shuttle – Pre Race - East Entrance

- During ingress, Paddock Club guests will be picked up from R7 then the shuttle will enter drag parking from gate A to drive through the drag strip service road and then they will be dropped at the East entrance of the Paddock Club.
- Same pick up & drop off points for egress.

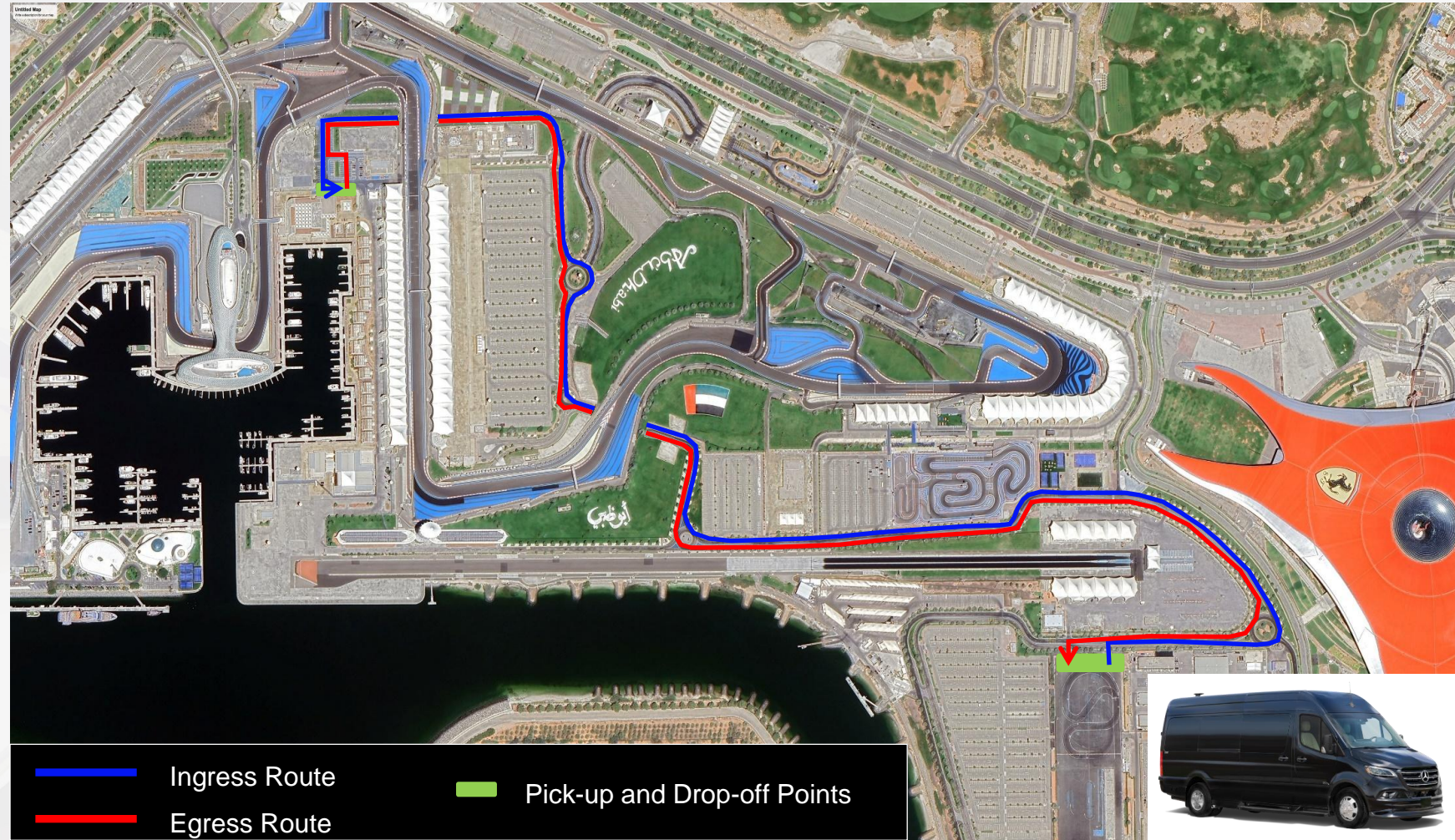


- During the egress, the shuttle will pick up guests outside the stairs of the entrance to Paddock Club (near CPU Building). The shuttle will then drive along the drag strip service road and exit onto the parking areas of drag strip.
- From there, the shuttle will make a left and have a stop in front of the Etihad Park Entry gate for any guest wanting to go to the concert.
- The shuttle will then make a U-turn and enter the Drag area, exit by taking a right out of Gate A, then head to the Red 7 shuttle drop off area for any of the guest who are going back to their cars.



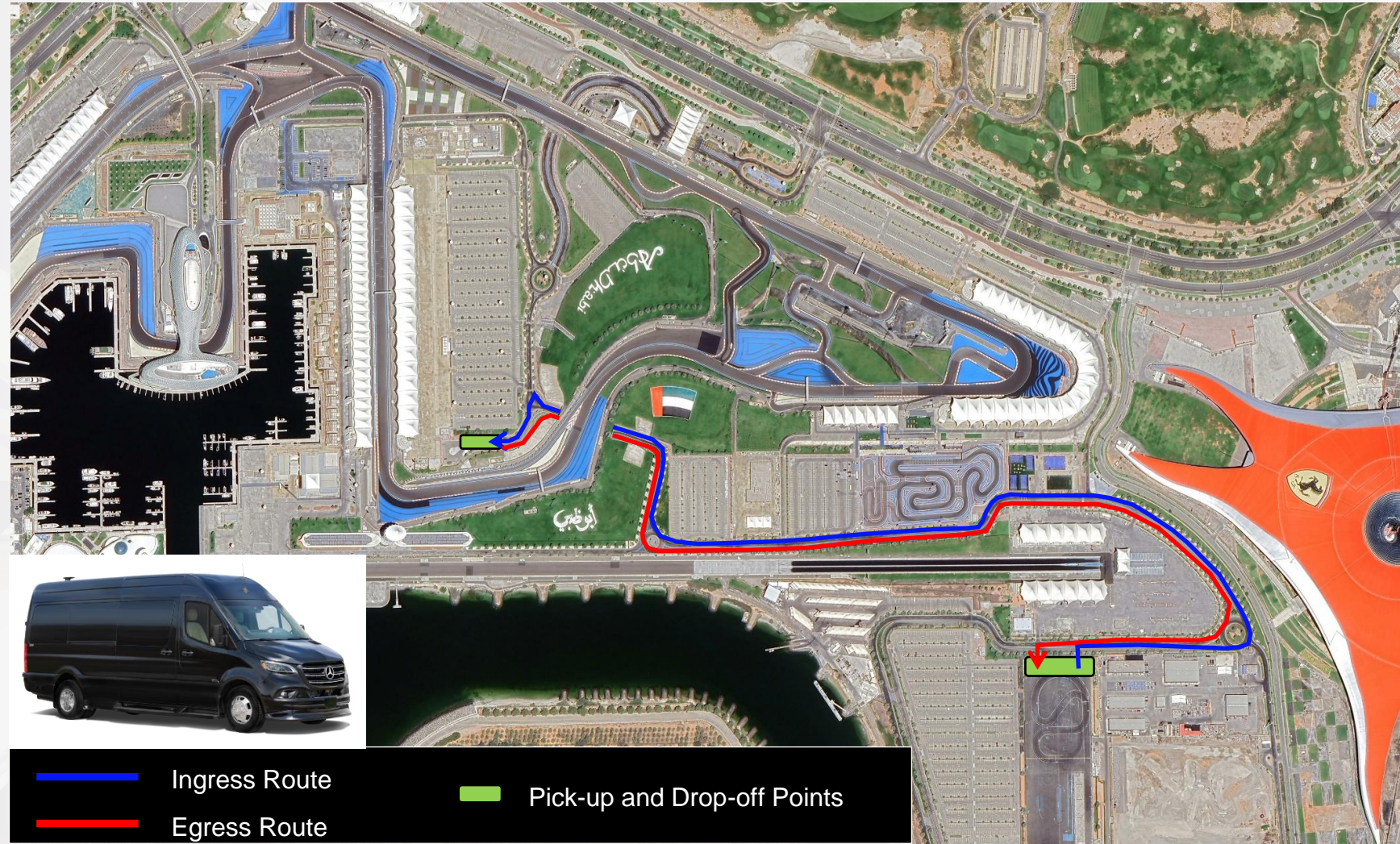
Paddock Club Shuttle – West Entrance

- During ingress, Paddock club guests will be picked up from R7 then the shuttle will head to Paddock Club West Entrance near the Media Center. This will grant guest who are seated in that area a shorter journey to their designated suite.
- During egress, The shuttle will pick up the guests outside the stairs of the new entry/exit way and take the guest back to the VDA/Red 7 area. From there, guest can walk or get picked up by their cars.
- **For mass egress, it's agreed with PC team to push guests to use the East Entrance that has increased capacity.



Paddock Club Shuttle – Turn 1

- All turn 1 Paddock Club guest will take an exclusive shuttle system to reach the Paddock Club Turn 1 seating area.
- Pickup & drop-off points located at enhanced VIP Roundabout.



RIDESHARE SERVICES OPERATION



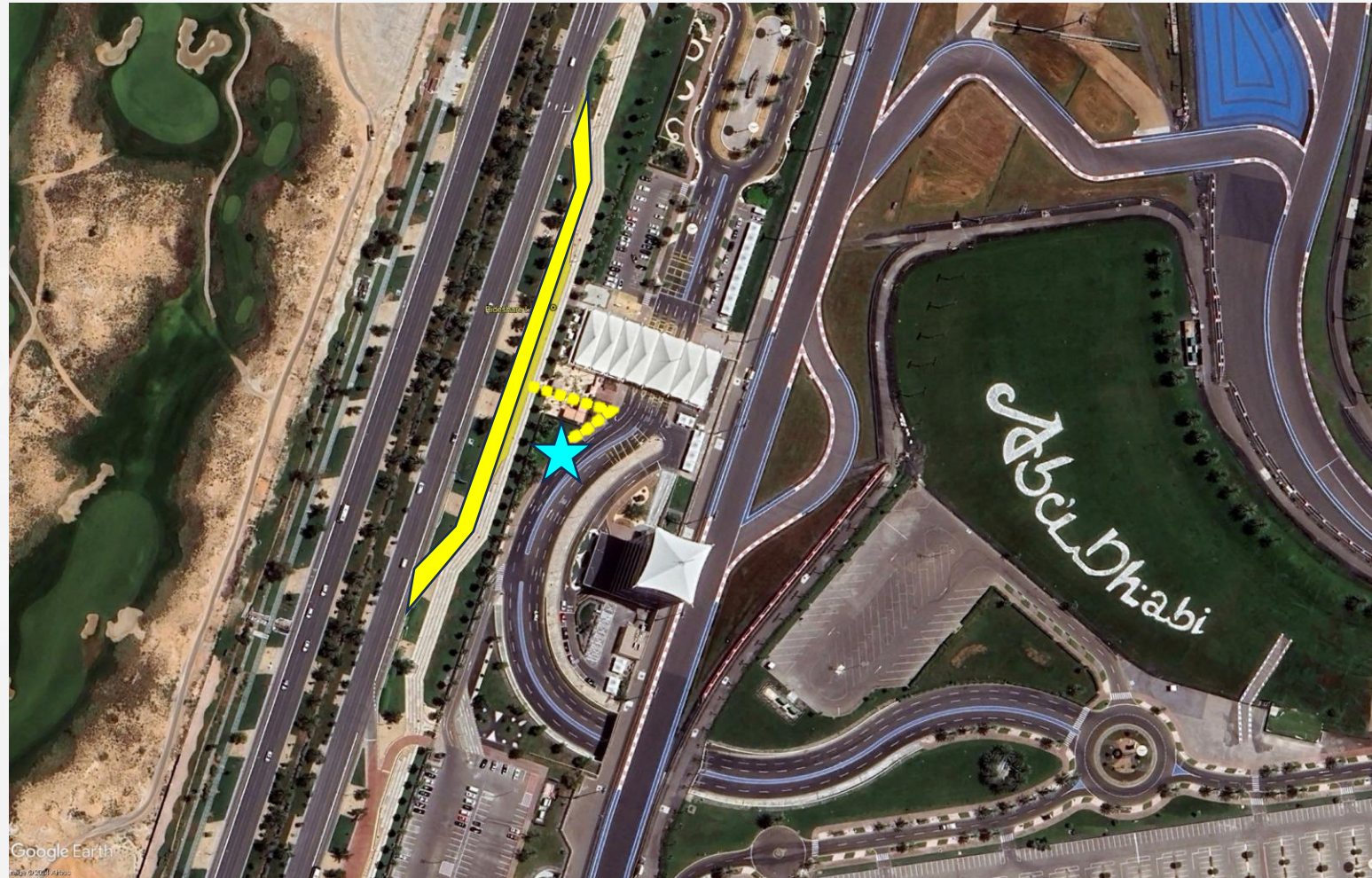
Rideshare Drop-Off - West

- West Gate: A central drop-off area exclusively designated for taxis, Careem, Uber, and other ride-sharing services, all recognized as standard Abu Dhabi Taxi options, specifically during race hours.
- Easy access to internal shuttles.
- Operation open 1 hours before the gate opening and closes by 6 PM.
- **No pickups after 6 PM.**

Guest Walking Route



Internal Shuttle Pickup



Rideshare – Yas Mall

- Yas Mall taxi main load zone located at Hyper Parking and follows Yas Mall operational hours:
- Thursday – Sunday 10:00 AM to 12:00 AM
- F&B shops will operate until 2 AM
- Taxi/Uber/Careem operation by the mall will still be operational 24 hours from the Hypermarket parking.



Rideshare - South

- Enhanced taxi service with a new Pickup/Dropoff point at C37 to support W Hotel guest's egress.
- New taxi staging area next to Multi-Story parking with 70 vehicles capacity to support Yas Marina and South Grandstand guests
- Main Taxi Staging Area at School Lot will feed both load zones with taxis on demand

— Taxi Ingress to Main Staging Area
— Main Staging Area to pickup point



Taxi Operations – After Concert

- After Concert: Taxi pickup and drop off within a short walking distance from Yasalam concert
- Massive staging capacity at R8 (Space availability TBC with landowner)
- Taxis start staging after 6 PM coming in waves to not impact the island traffic.

■■■■■ Guest Walking Route from concert to Taxi Pickup

