

Yas Marina Circuit (YMC) Formula 1's only twilight race starts in early evening sunshine and concludes in the dark. Yas Marina is a curious circuit where each of the three sectors exhibits different characteristics. Sector One contains the high-speed Turns Two and Three. Sector Two contains the two long straights, the first of which terminates in a tight chicane. Sector Three is reminiscent of a street circuit which winds around the marina front and under the Yas Hotel with rapid changes of direction.

A Hermann Tilke design, YMC holds a FIA Grade 1 License. The track surface is made from Graywacke aggregate from Baystaon Hill Quarry in Shropshire, England. The largest permanent lighting system of any circuit, 600 million-lumen ensures seamless transition as day turns to night. YMC is operational 0900-2400hrs, 7 days a week, 365 days a year. A circuit that will cool rapidly as the day progresses into darkness and with zero noise level restrictions make YMC a very attractive testing venue.

SALES@YMC.AE 800 YAS (927) YASMARINACIRCUIT.COM

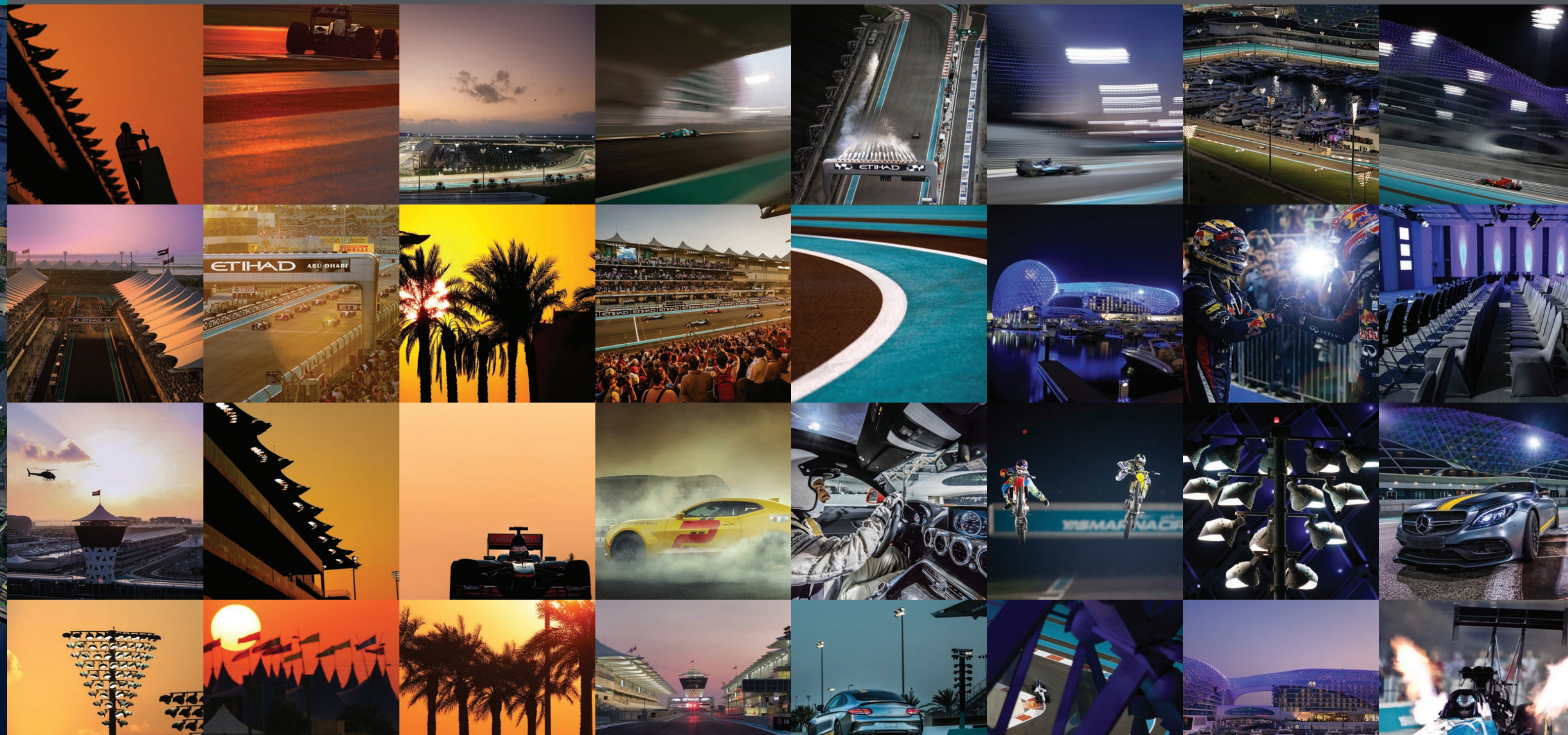
حلبة مرسى ياس
YAS MARINA CIRCUIT

WELCOME TO YAS MARINA CIRCUIT

YAS LINES
WARNER BROS WORLD
Yas Waterworld
Ferrari World Abu Dhabi
YAS MALL
RETAIL - HYPERMARKET RESTAURANTS, FOOD COURT, CINEMAS
NORTH GRANDSTAND
ETHHAD PARK
YAS BRAS
YAS ART
VEHICLE DYNAMIC AREA
EAST ENTRANCE
FUEL STATION 1

TIME ZONE	GMT	1-4
SYDNEY	1-4HRS	
HONG KONG	1-4HRS	
LONDON	1-3/4HRS	
NEW YORK	1-9HRS	

Month	Jan	Feb	Mar	Apr	May	Jun	Jul	Aug	Sep	Oct	Nov	Dec
Temperature Average	°C 18	20	23	27	31	33	35	36	33	29	25	21
	°F 64	68	73	81	88	91	95	97	91	84	77	70
Sunshine Average	Hours 9	11	11	11	13	13	12	12	12	11	10	10
Rainfall Average	mm 10	20	10	10	10	10	10	10	10	10	10	10
	Days 6	3	6	3	0	0	0	0	0	0	1	3



INTERNATIONAL AIRPORTS X 3
A GLOBAL LOGISTICS HUB. TWO THIRDS OF THE WORLD'S POPULATION WITHIN AN EIGHT-HOUR FLIGHT.
AUH ABU DHABI INTERNATIONAL AIRPORT 120KM (120MINS) TO YMC AND DMCC DUBAI INTERNATIONAL AIRPORT 150KM (120MINS) TO YMC AND DMCC DUBAI WORLD CENTRAL 90KM (60MINS) TO YMC.

EAT ON ISLAND
+120 FOOD AND BEVERAGE OUTLETS ON YAS ISLAND

YAS PLAZA HOTELS
STAY ON ISLAND
2 MINS FROM 7 HOTELS
2,500 ROOMS UNDER 2KM

WEST GRANDSTAND
WEST ENTRANCE
PIT TUNNEL EXIT
MAIN GRANDSTAND
MAIN PIT GARAGES
TEAM VILLAS
SHAMS TOWER
FUEL - TYRE STORE
W HOTEL
CONNECTED TO THE CIRCUIT
THE ICONIC 5-STAR HOTEL
499 GUEST ROOMS

CIPRIANI
YAS ISLAND
227 BERTHS AND LICENSED RESTAURANTS

YAS BRAS
YAS ART
VEHICLE DYNAMIC AREA
EAST ENTRANCE
FUEL STATION 1
GATE 7
SOUTH GRANDSTAND
SUPPORT RACE CONTROL
MARINA GRANDSTAND
SUPPORT PITS
YAS CONFERENCE CENTRE
MEDICAL CENTRE - HELIPAD
MAIN RACE CONTROL
WEST ENTRANCE

PIT & PADDOCK

MAIN PIT GARAGES (FORMULA 1® PIT BOXES)

There is 6 block of 6 garages, and 1 block of 4 (Main Pits 1-4 Scrutineeing)	TV screens: 1 x 32" TV per pit with VLC playback capability
Each pit can be securely partitioned creating an individual working space.	Compressed air lines: Connection 1/2 inch BSP regulated to 12 Bar
Dimensions: Length 20.5M x Width 6.7M x Height 2.5M (approx. 140sqm)	Electrical
Door opening: Width 3.3M x Height 2.5M	<ul style="list-style-type: none"> Up to 174 amp single phase Up to 255 amp 3 phase 4 x AV points 8 x Data points
Access: programmed RFID access cards	
Bathrooms: 1 x Toilet & washbasin per Pit	
Internet: WIFI and LAN capable Internet speed as desired	



SUPPORT PIT GARAGES

Support Pit Lane: Length: 280M x Width 14M Speed Limit 60kph	No Compressed air lines
30 x Pit Garages (Non- air-conditioned) Blocks of 6 Pit Garages	Bathrooms: 1 x Toilet & washbasin per Pit
There is 4 block of 6 garages, and 2 block of 3 (Support Garages 1-3 Scrutineeing)	Internet: WIFI and LAN capable Internet speed as desired
Each pit can be securely partitioned creating an individual working space.	TV screens: 1 x 32" TV per pit with VLC playback capability
Track configuration: South Circuit, Full GP, GP Corkscrew	Electrical
Dimensions: Length 15M x Width 6M x Height 2.5M (approx. 90sqm)	<ul style="list-style-type: none"> Up to 174 amp single phase Up to 255 amp 3 phase 4 x AV points 8 x Data points
Door opening: Width 3.5M x Height 2.5M	
Access: RFID programed cards	



TYRE STORE & FUEL STORE

Dimensions: Width 23M x Length 33M x Height x 4M (approx. 750 SQM)	Internet: WIFI and LAN capable
Door opening: Width 3M x Height 2.5M	Access: RFID programed cards
There is 2 x office space in tyre store, 1 x office space in fuel store	Electrical
Bathrooms: 1 x Toilet & washbasin, 1 x shower	<ul style="list-style-type: none"> Up to 224 amp 3 phase Up to 26 amp single phase

CIRCUIT MAP



FIA GRADE 1
CIRCUIT

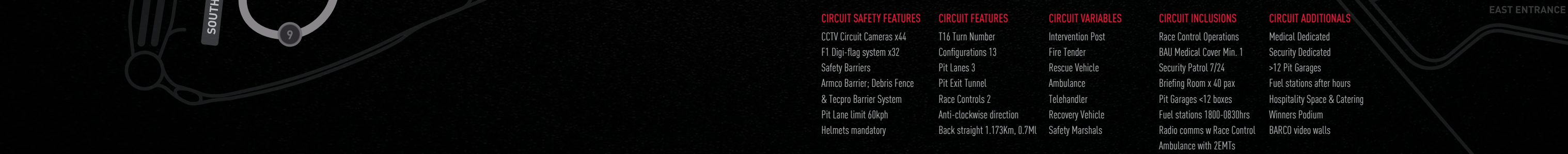
CIRCUIT 11 Meters
ELEVATION 36 Feet
CHANGE

ANTI-CLOCKWISE
DIRECTION

NOISE LEVEL
NO RESTRICTION
09:00-24:00HRS

FLOOD LIGHTS / EFFICIENCY 14.171.365
14 HOURS PER DAY
7 DAYS A WEEK
365 DAYS A YEAR

WET WEATHER
SIMULATED TESTING
AVAILABLE ON REQUEST



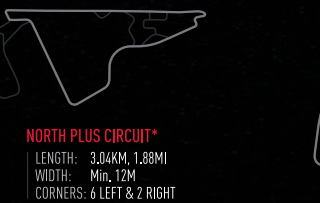
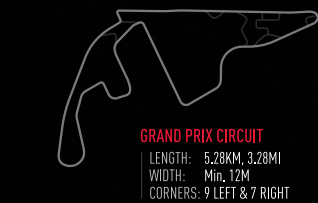
CIRCUIT SAFETY FEATURES
CCTV Circuit Cameras x44
F1 Digi-flag system x32
Safety Barriers
Armco Barrier, Debris Fence
& Tecpro Barrier System
Pit Lane limit 60kph
Helmets mandatory

CIRCUIT FEATURES
116 Turn Number
Configurations 13
Pit Lanes 3
Pit Exit Tunnel
Race Controls 2
Anti-clockwise direction
Back straight 1.173km, 0.7MI

CIRCUIT VARIABLES
Intervention Post
Fire Tender
Rescue Vehicle
Ambulance
Telehandler
Recovery Vehicle
Safety Marshals

CIRCUIT INCLUSIONS
Race Control Operations
BAU Medical Cover Min. 1
Security Patrol 7/24
Briefing Room x 40 pax
Pit Garages <12 boxes
Fuel stations 1800-0830hrs
Radio comms w Race Control
Ambulance with 2EMTs

CIRCUIT ADDITIONALS
Medical Dedicated
Security Dedicated
>12 Pit Garages
Fuel stations after hours
Hospitality Space & Catering
Winners Podium
BARCO video walls



* NORTH & SOUTH CIRCUIT CAN BE RUN INDEPENDENTLY MAKING IT POSSIBLE TO RUN THE TWO CIRCUITS SIMULTANEOUSLY.

HOSPITALITY

TEAM VILLAS

These three-storey Team Villas, with luxurious Italian design finishes are as perfect for client meetings or entertaining as they are for the F1 Teams base of operations during the Grand Prix weekend. Each villa has several offices and dining options complete with commercial kitchen and showers. Total 18 Team Villas of which the two central villas are of larger size and 16 standard size. Ground floor small = 57sqm, Ground floor Large = 125sqm.



PADDOCK CLUB SUITES

Located directly above Main Pit Garages the Paddock Suites overlook the circuits main starting grid and offer truly unique views. There are 16 interconnected suites to choose from across three levels, each able to cater up to 774 guests in a variety of configurations. One suite = 550 sqm.

MARINA VIEW SUITES

Located directly above Support Pit Garages the Marina View Suites overlook the South circuit starting grid as well as the best views of the Yas Marina and iconic Yas Hotel and are ideal hospitality option for any track activity on south circuit or when using the support pit garages. There are 3 large air-conditioned suites, one suite = 806 sqm.



YAS CONFERENCE CENTRE

Yas Conference Centre (YCC) consists of 11 flexible venue spaces, each with natural sunlight and many that are fully customizable to your brand. Take advantage of the Abu Dhabi sunshine and choose one of our outdoor roof terraces for event with a view over the surrounding ocean.

GP HALLS

GP Halls at YCC. The place to go for large scale in-door events, with 1,177 sqm of floor space and three meeting rooms it is able to host up to 1,200 guests. The dynamic venue can stage three events at once, and features built-in audio and Barco screens. This standalone venue can be booked exclusively, offering privacy for high profile or confidential content.

MEDIA CENTRE

Media Centre YCC doubles as the official F1 Media Centre for the Grand Prix weekend and is available for hire in this configuration or depending on your requirements a Media Centre can be configured in one of our many other locations specific to your requirement and locations.

